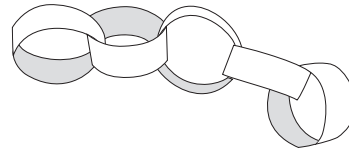




MG1 Measurement with metres

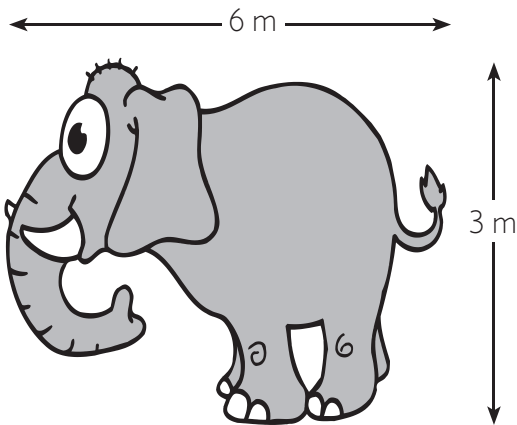
- 1 Make a paper chain that is 2 metres long. Use a metre ruler to check.
- 2 Use the paper chain to find things inside or outside the classroom that are about 2 metres long, wide or high. List these below.

Work in pairs

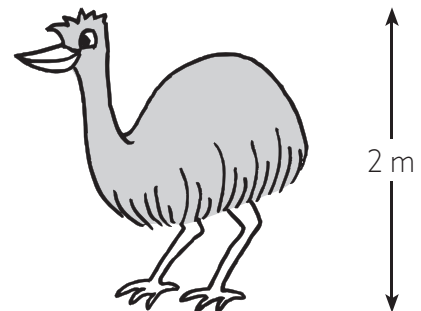


- 3 Using chalk on cement, draw the animals shown below at full size. (Use a metre ruler or string cut to exactly 1 metre to help.)

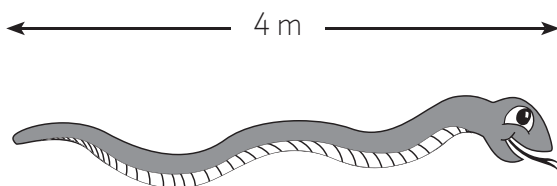
Work in pairs



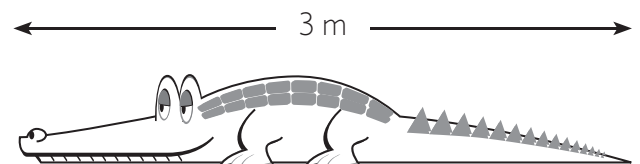
Elephant



Emu



Python



Crocodile



MG1 Measurement with metres

- 1 Cut a piece of string or ribbon to exactly one metre. Use this one metre length to find which is longer, a tennis court or a basketball court?

Length of tennis court is metres.

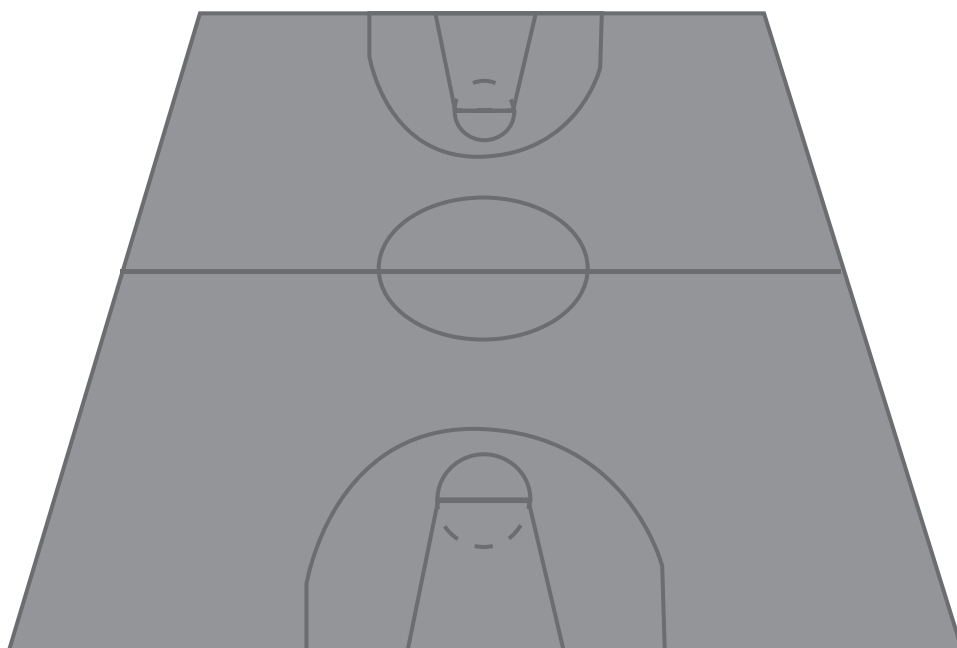
Length of basketball court is metres.

is longer.

Work in pairs

- 2 Estimate and then measure the distance right around the outside of a tennis court and basketball court. Use a trundle wheel to measure.

	Estimate	Measure
Tennis court		
Basketball court		

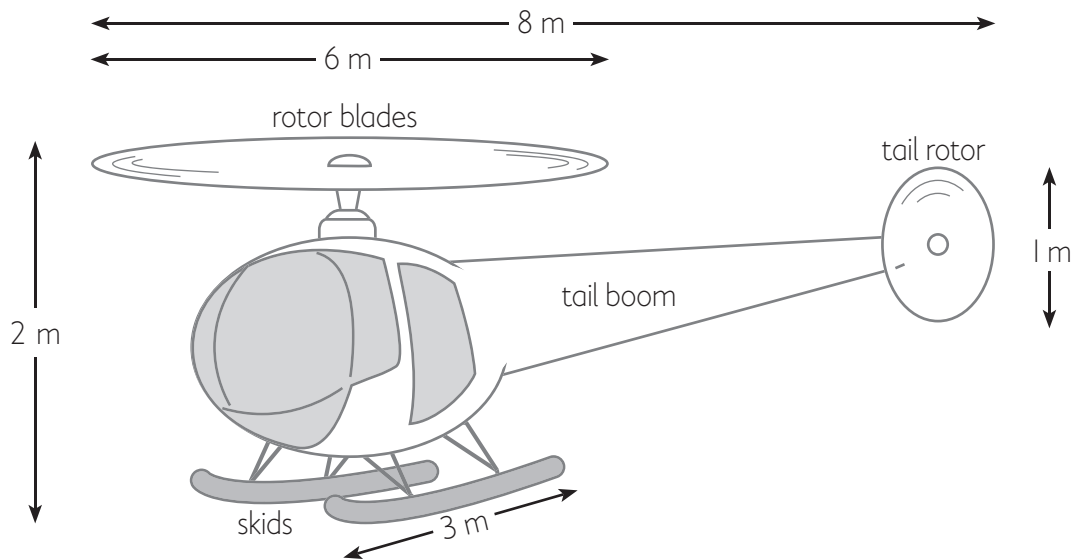




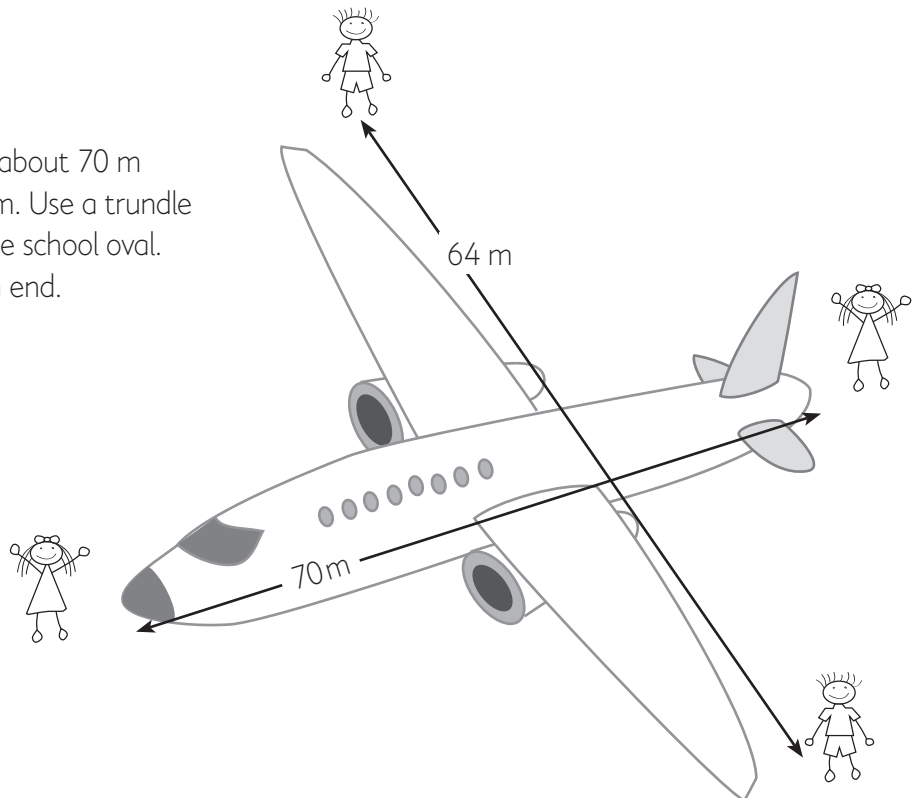
MG1 Measurement with metres

- 1 Use a metre ruler or piece of string cut exactly to one metre, to draw a full size helicopter, using chalk on cement. Use the metre measurements shown in the drawing below.

Work in small groups



- 2 A Boeing 747 has a length of about 70 m and a wingspan of about 64 m. Use a trundle wheel to measure it out on the school oval. Ask students to stand at each end.

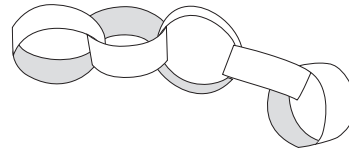




MG1 Measurement with metres

- 1 Make a paper chain that is 2 metres long. Use a metre ruler to check.
- 2 Use the paper chain to find things inside or outside the classroom that are about 2 metres long, wide or high. List these below.

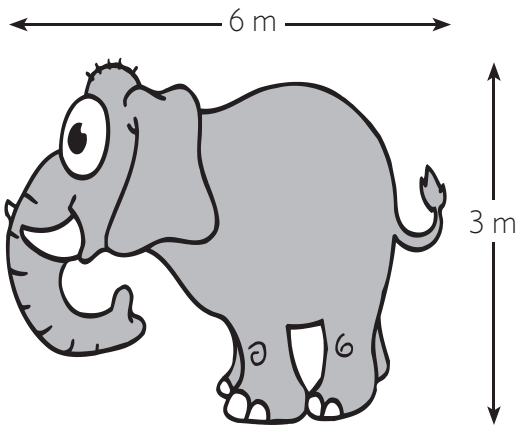
Work in pairs



TEACHER TO CHECK

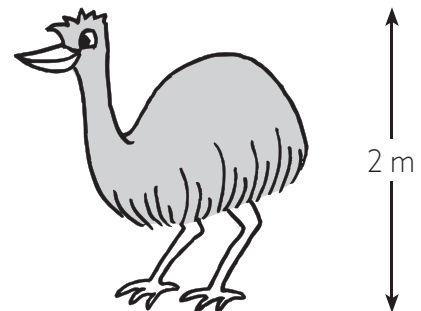
- 3 Using chalk on cement, draw the animals shown below at full size. (Use a metre ruler or string cut to exactly 1 metre to help.)

Work in pairs

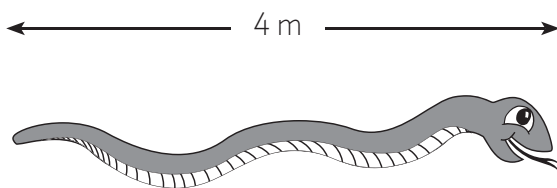


Elephant

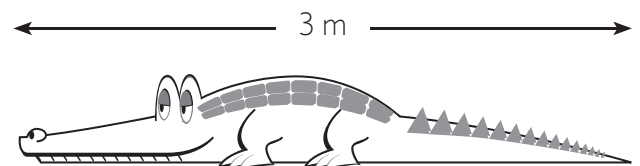
TEACHER TO CHECK



Emu



Python



Crocodile



MG1 Measurement with metres

- 1 Cut a piece of string or ribbon to exactly one metre. Use this one metre length to find which is longer, a tennis court or a basketball court?

TEACHER TO CHECK

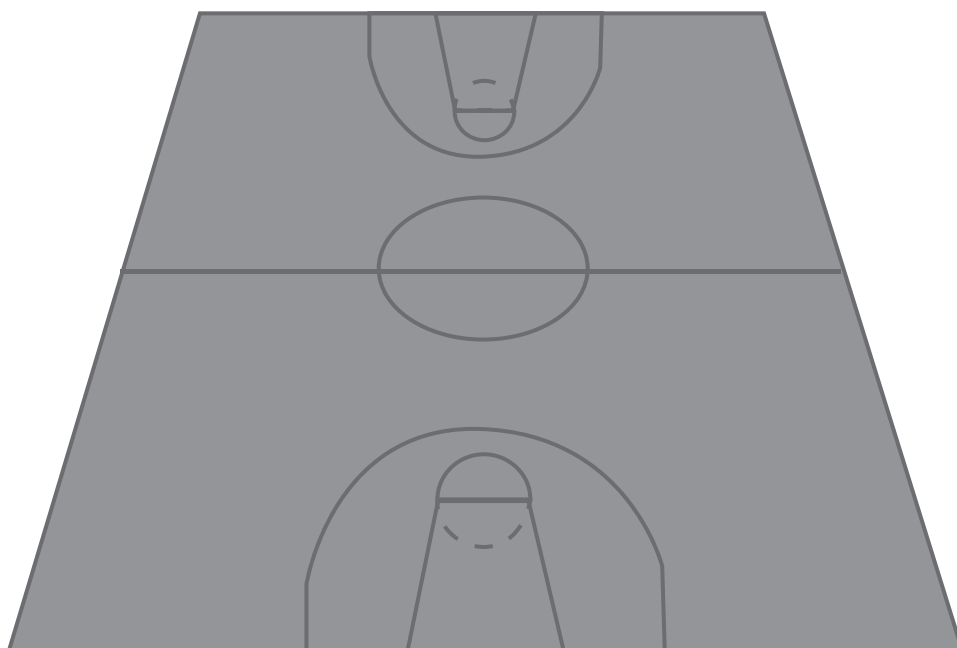
Length of tennis court is metres.
 Length of basketball court is metres.
 is longer.

*Work in
pairs*

- 2 Estimate and then measure the distance right around the outside of a tennis court and basketball court. Use a trundle wheel to measure.

TEACHER TO CHECK

	Estimate	Measure
Tennis court		
Basketball court		

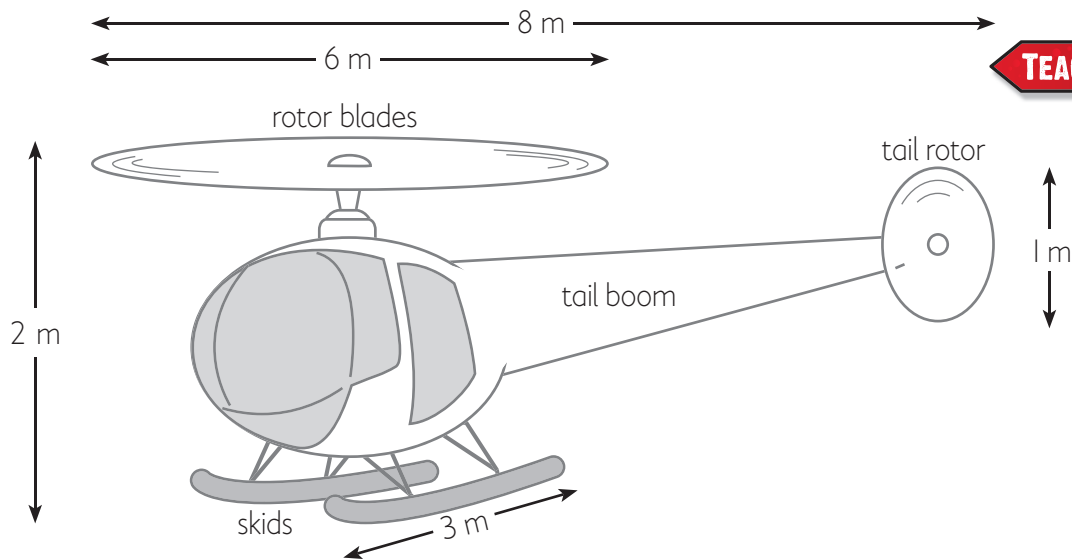




MG1 Measurement with metres

- 1 Use a metre ruler or piece of string cut exactly to one metre, to draw a full size helicopter, using chalk on cement. Use the metre measurements shown in the drawing below.

Work in small groups



TEACHER TO CHECK

- 2 A Boeing 747 has a length of about 70 m and a wingspan of about 64 m. Use a trundle wheel to measure it out on the school oval. Ask students to stand at each end.

TEACHER TO CHECK

